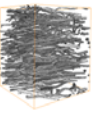
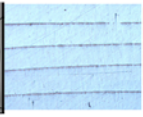
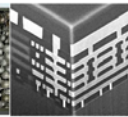
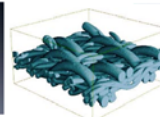
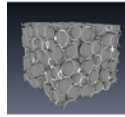


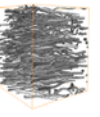
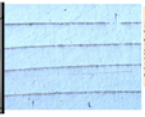
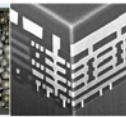
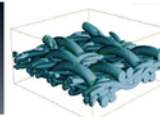
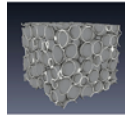


Groupement d'Intérêt Scientifique (GIS)
sur les
Multi matériaux architecturés
entre
Grenoble-INP et INSA Lyon



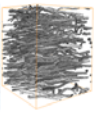
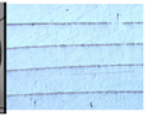
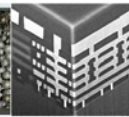
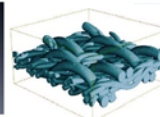
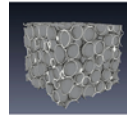
GIS Multi matériaux architecturés

- Choix de la thématique
- Les missions
- La structure
- Le calendrier



Choix de la thématique

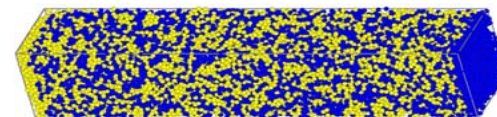
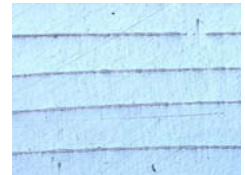
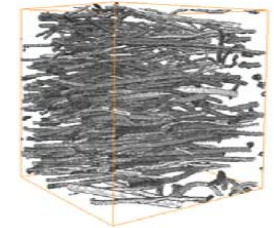
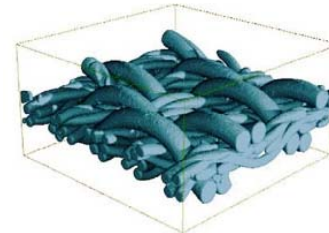
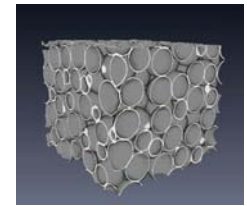
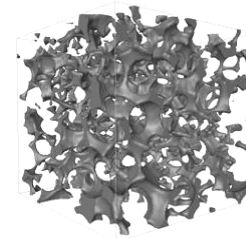
- Cahiers des charges complexes
 - Multifonctionnalité - Matériaux sur mesure
- Défis scientifiques en science des matériaux communs à plusieurs secteurs applicatifs
- Secteurs applicatifs variés
 - Energie, Transports, Bâtiments, Micro Nano Tech., Santé
- Expérience commune entre Lyon et Grenoble

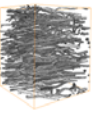
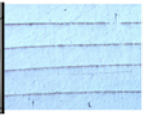
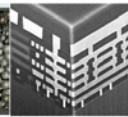
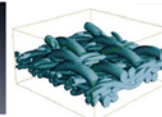
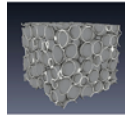


Choix de la thématique

- Des matériaux étudiés sur les deux sites

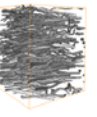
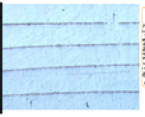
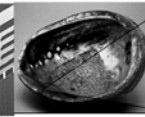
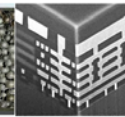
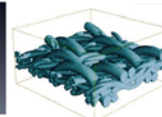
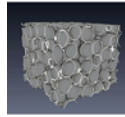
- Particulaires
- Cellulaires
- Enchevêtrés
- Multi couches
- Matériaux à gradient
- Bio inspirés
- ...





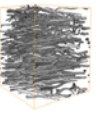
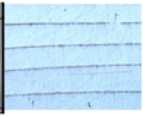
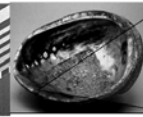
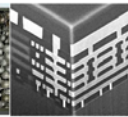
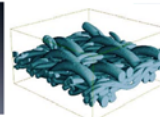
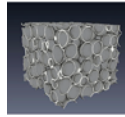
Les missions

- Cinq missions principales
 - Formation
 - Recherche
 - Plates formes technologiques
 - International
 - Valorisation



Les missions

- Formation
 - Formation commune sous forme de cours d'école doctorale
 - Accès croisé aux étudiants des écoles doctorales entre Lyon et Grenoble
 - Organisation d'écoles d'été, alternativement sur Lyon et Grenoble



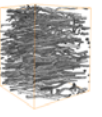
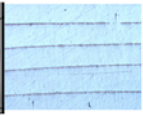
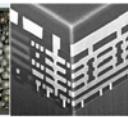
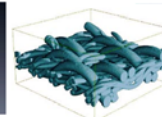
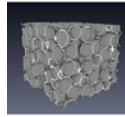
Les missions

- Recherche

- Thèses communes entre Lyon et Grenoble sur la thématique
- Animation scientifique : journée thésards entre les deux sites, séjours croisés de thésards, journées thématiques...
- Soutiens aux investissements
- Diffusion de l'information (www.materiauxarchitectures.fr)

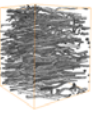
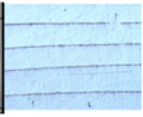
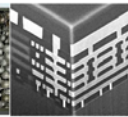
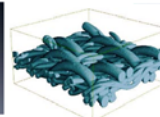
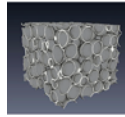
- Plates formes technologiques

- Soutien aux plates formes de caractérisation (CMTC sur Grenoble et CLYM sur Lyon)
- Propositions investissements caractérisation



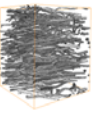
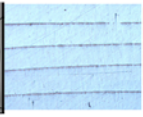
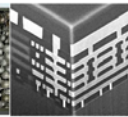
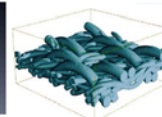
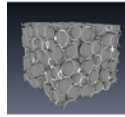
Les missions

- International
 - Renforcement des collaborations internationales
 - Soutien aux séjours de doctorants à l'étranger
 - Accueil de chercheurs étrangers
 - Actions concertées avec le GDR Européen HETMAT
- Valorisation
 - Mise en place d'un observatoire industriel
 - Rencontres régulières avec exposés des résultats
 - Promotion du transfert industriel



La structure

- GIS inter établissement
 - structure souple, émanant de la volonté des deux établissements
 - Responsables sur Grenoble et Lyon
 - Bureau avec représentants des laboratoires
- Budget
 - Soutiens des établissements + cotisation équipes de recherche
- Evaluation
 - Rapport d'activité annuel + évaluation par les deux établissements



Le calendrier

- Aujourd'hui

- Membres actuels: équipes de 7 laboratoires issus des 2 sites
- Larges spectres couverts (disciplinaire et applicatif)

- Actions

- Convention inter établissement en cours
- Lancement début 2011
- Rendre le GIS opérationnel dès le lancement effectué